

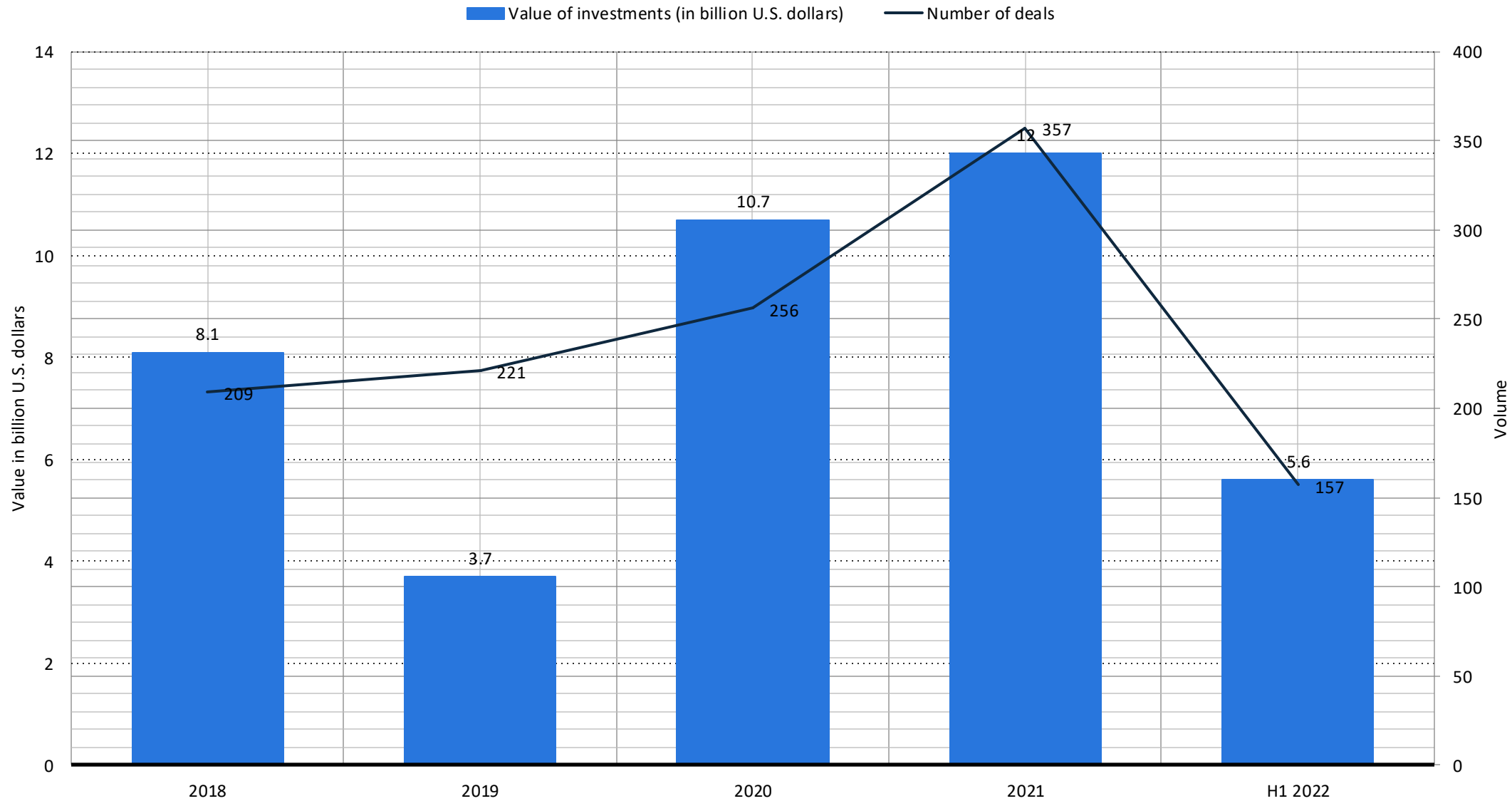


RegTech

November 2023



Total value and number of venture capital, private equity, and merger and acquisition (M&A) investment deals in regtech worldwide 2018 to H1 2022





“I have a dream. It is futuristic, but realistic. It involves a Star Trek chair and a bank of monitors. It would involve tracking the global flow of funds in close to real time ..., in much the same way as happens with global weather systems and global internet traffic. Its centerpiece would be a global map of financial flows, charting spill-overs and correlations.” Andy Haldane, Chief Economist, Bank of England (2014)

--source: Arner et al. (2016)



“I have a dream. It is futuristic, but realistic. It involves a Star Trek chair and a bank of monitors. It would involve tracking the global flow of funds in close to real time ..., in much the same way as happens with global weather systems and global internet traffic. Its centerpiece would be a global map of financial flows, charting spill-overs and correlations.” Andy Haldane, Chief Economist, Bank of England (2014)

--source: Arner et al. (2016)



Global Maritime Traffic

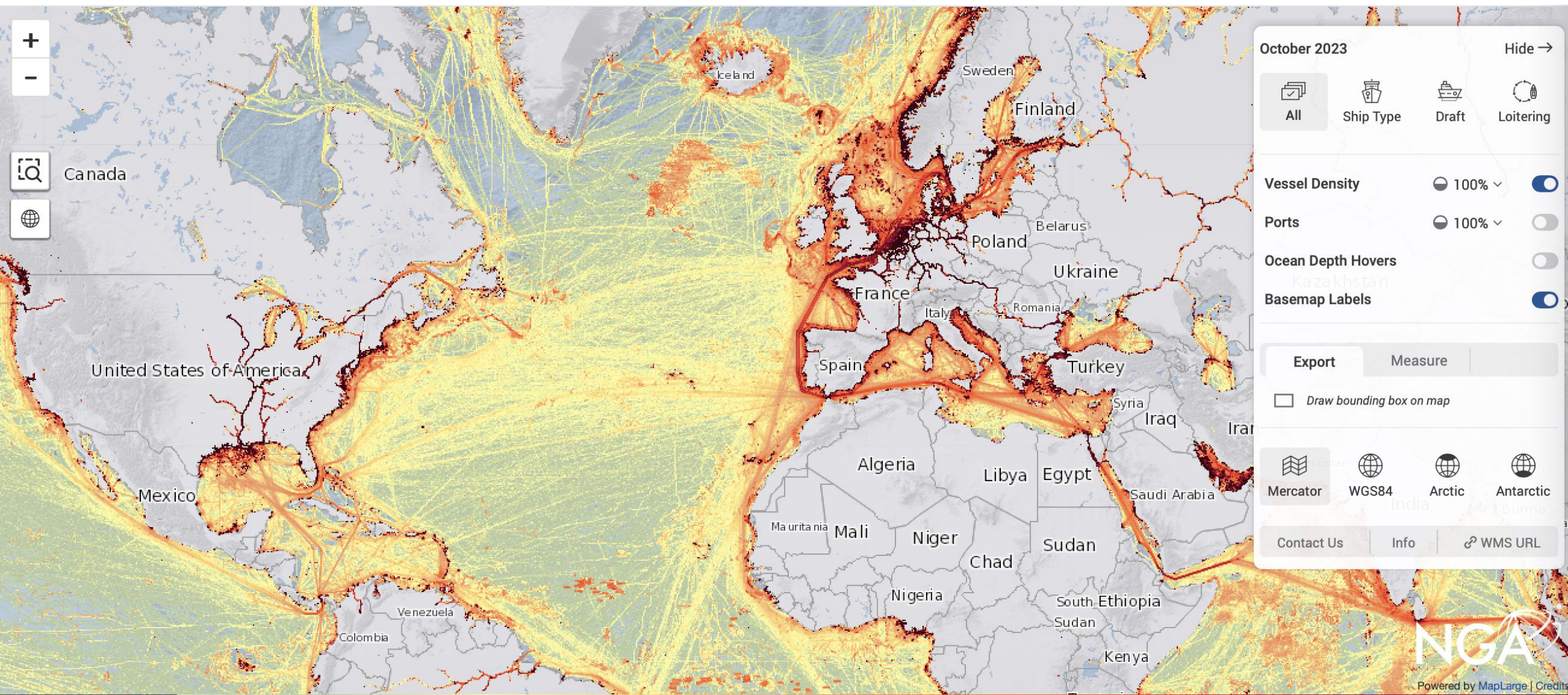
- 90% of goods transported globally move on ships
- Each ship carries an AIS device, that continuously broadcasts its location, speed, and heading
- Publicly available AIS data enables real-time monitoring of all traffic

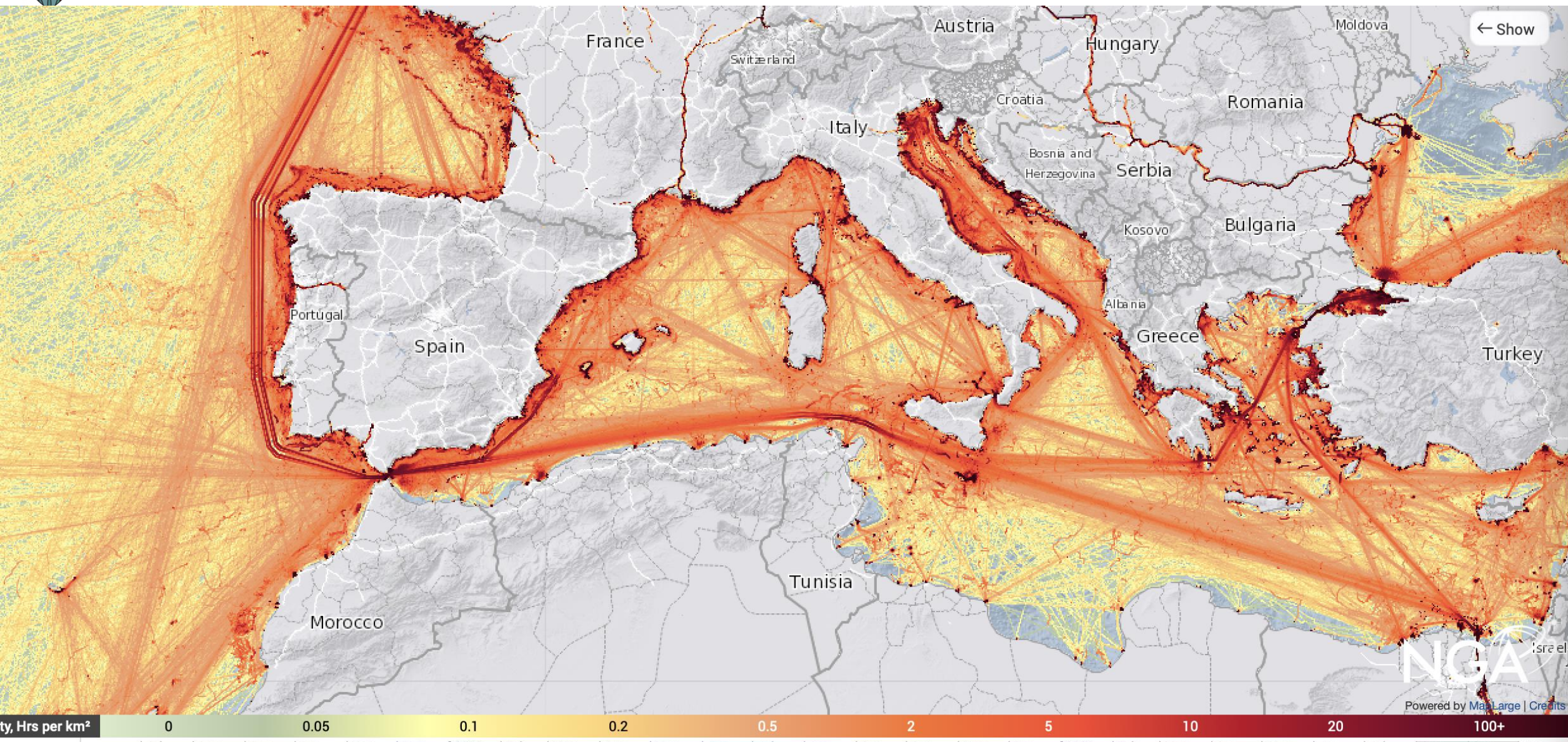
This article is published in collaboration with

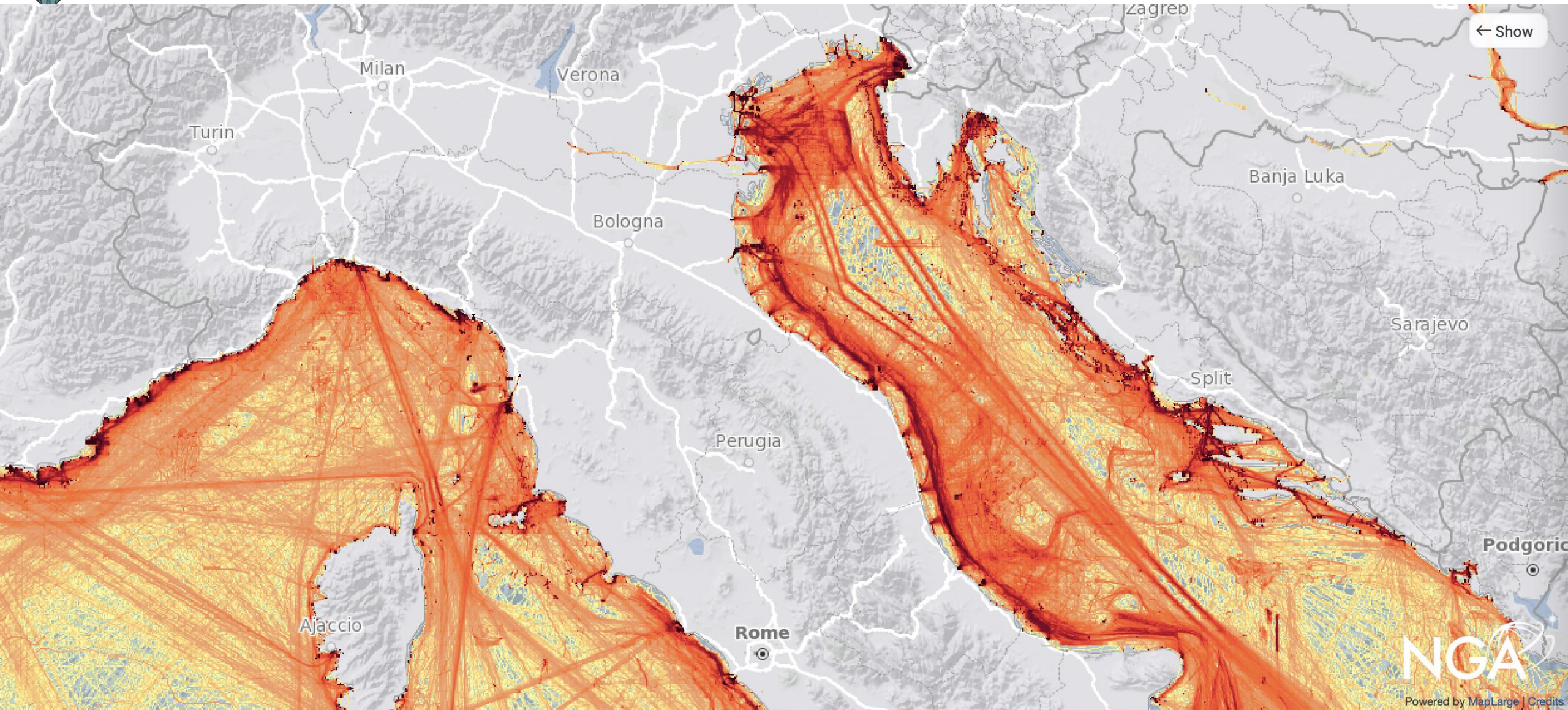
Visual Capitalist



Source: <https://www.weforum.org/agenda/2022/06/shipping-lanes-maritime-traffic-global-maps/>





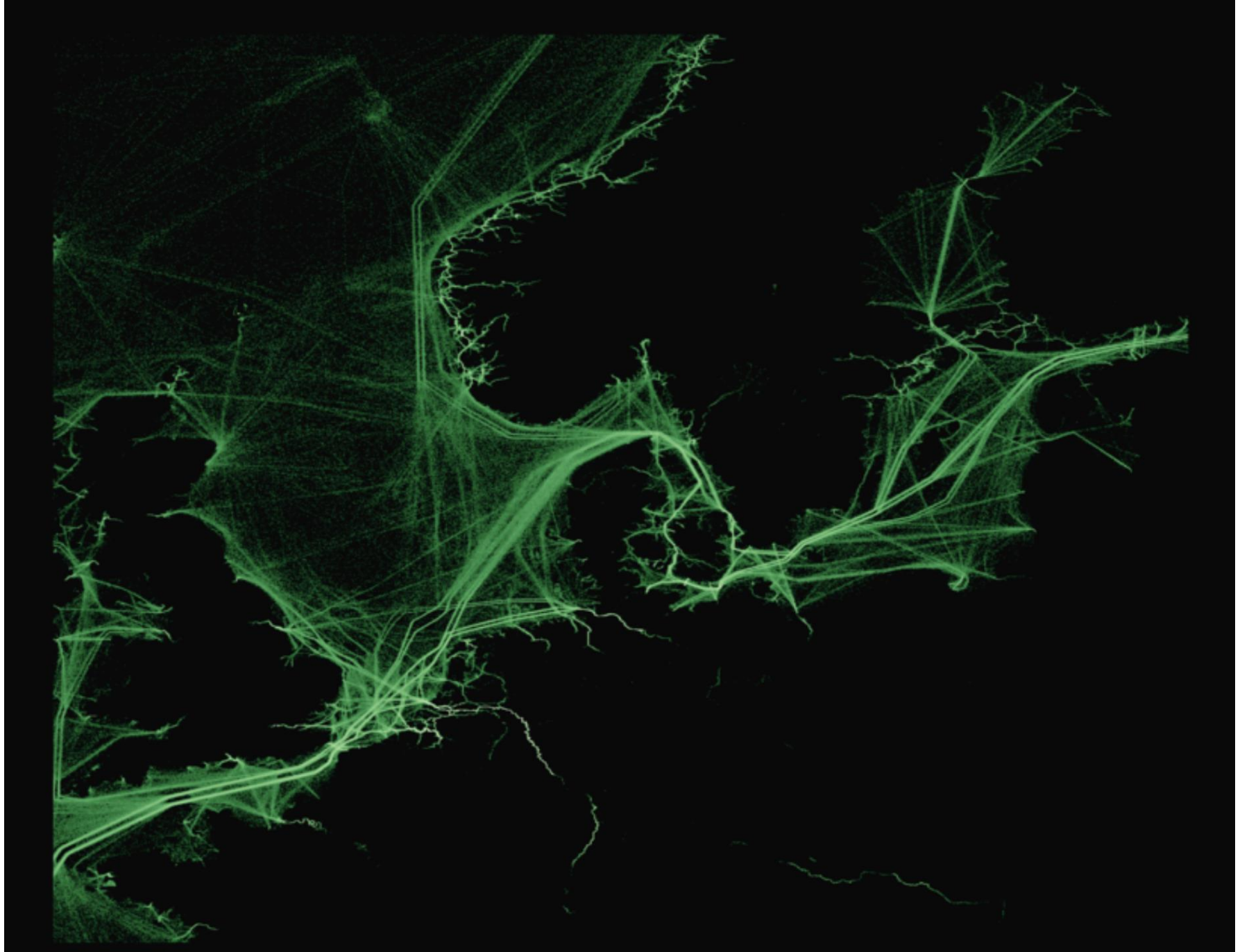


NGA
Powered by MapLarge | Credits

Jul | Aug | Sep | Oct | Nov | Dec | 2022 | Feb | Mar | Apr | May | Jun | Jul | Aug | Sep | Oct | Nov | Dec | 2022 | Feb | Mar | Apr | May | Jun | Jul | Aug | Sep | Oct



Danish Strait



Source: <https://www.weforum.org/agenda/2022/06/shipping-lanes-maritime-traffic-global-maps/>



Should regulators be able (required?) to monitor financial transactions in the same way?